

AXIS MUNDI SUMMER 2017

ISSN 1839-4396





Contents

Note from the Editor	page 3
Out with the Old & in with the New	page 4
The Origin of Fairies	page 6
Make your own Fairy Garden	page 8
Salamander - A Summer Totem Animal	page 10
Legend of Hathor	page 12
Path to Hathor Journey to Denderah Temple	page 14
Jingle All The Way ~ Making Your Own Silver Branch	page 18
Mediumship & Psychic Development Circle	page 19
2017 Abundance Spell Casting	page 20
Lisa Winter - Visionary Artist and Spiritual Advisor	page 22
Janine Donnellan is conducting Readings & Healings	page 23
5D Astrology Report: 2017	page 24
Lughnasadh Full Moon Ritual at Spheres Of Light	page 29
Secret Shroud	page 30
In Light of Healing	page 34
Tarot Corner	page 35
Membership to Spheres of Light	page 36
Space Clearing & Paranormal Consultant	page 38
What is PAN Inc.?	page 39
Spheres Of Light Full Moon Circles	page 40
SOul Searchers Paranormal Research	page 41
Axis Mundi Advertising rates	page 42
SOL Illumination Information	page 43

Cover: Mushroom Fairy Magic by Brandrificus

<http://brandrificus.deviantart.com/art/Mushroom-Fairy-Magic-285846082>

Unauthorized use of the Spheres Of Light logo is prohibited. Logo Copyright © 2006-2017 Spheres Of Light. All rights reserved. Website designed, built & maintained by Jenwytych. Original Axis Mundi design, layout & production by Jenwytych (March 2008 to May 2011). PDF version of Axis Mundi Magazine design, layout & production by Janine Donnellan (from June 2011 onwards).



Note from the Editor

Happy New Year!

It has been said that in a world of order, chaos reigns. 2016 has certainly been one of those years!

Even though 2016 may have presented to you various obstacles and hurdles, be proud that you managed to overcome all and cross the bridge to another new year.

Enough said about 2016 and now we are in a new year. Yay! I have great expectations for 2017, for a start this year is a one in numerology, which means new beginnings, and that the vital energy and positive thrust of life will be replenished and will provide each of us a renewed hope for a brighter more satisfying future. Well that's the theory of it anyway.

May this New Year bring you a peace filled life, warmth and togetherness in your family and much prosperity! Happy New Year!

Blessings

Janine Donnellan



Out with the Old & in with the New!

Space Clearing for 2017

Christmas is now over for another year and sometime over the next few days we will be taking down our Christmas tree and getting ourselves ready for another year of uncertainty.

While you are cleaning up after all the festivities why not give your house an extra boost by incorporating a space clearing ritual into your cleaning? While most of us inhabit our places unconsciously, perhaps we should approach our home as a living breathing entity and start learning how to live in harmony and with considered intention in your personal space. While you are cleaning your home you could spend some time thinking about how you want your home to work for you. Use these tips in your space (or in your newly reinvented old space) to clear out the old energy and bring in the new!

Start with a clean and decluttered space

If you want a new reinvigorated space, make sure it's clean and free of clutter so that the energy can move freely around. Start by opening windows and doors and let fresh air circulate freely throughout all rooms.

As you are opening windows and doors think about your intentions for your home: What would you like to accomplish this year while you are living there? Perhaps you'd like to start a family, build your career, or lead a more

balanced life. Whatever your intentions are, say them out loud as if they are happening in the present as you move from room to room. You can even have a different intent for each room.



As you walk through each room you need to shake up the energy to help get rid of accumulated negative energy. You can do this by ringing a small bell in each room: Let it ring until the sound dies down. You can also clap your hands briskly or hit a saucepan as you move through the home.

Sage is a popular herb to burn as it has a long history of getting rid of old energies. You can

also use eucalyptus smudge sticks as well. Make sure you have a bowl under the stick to catch the burning embers. You can also use a feather to help waft the smoke through each room. Don't forget to smudge yourself in the process, you will be surprised how refreshing it is to clear away all your own negativity.



You could also place small piles or bowls of sea salt in each corner to help remove the old energy. Let the salt sit for 24 hours and then dispose of it.

Salt Crystal Rock and lamps made from Salt Crystal Rocks are natural air ionizers. Negative Ions produced by Salt Crystal Lamps effectively, and naturally improve the quality of the air by producing negative ions - the "Vitamins of the Air. Negative Ions give the air its invigorating freshness, airborne bacteria free, which is so beneficial for humans.



You can also spray your house with water, sea salt and lavender oil, this will change the environment of your place making it feel calm

and peaceful. You could replace the lavender oil with one of your own choosing.

Place some black Tourmaline or Hematite in each corner of the room: Its properties are said to help ground your space and protect you.



In order to keep you house clear of negativity you should follow this process on a monthly basis. Remember to reinforce your intentions as you clean each room.

About Janine Donnellan – SOL Illumination

Janine is a Spiritual & Paranormal Advisor and an Energetic Healer and teaches parapsychology and a variety of spiritual workshops including Shamanic Journeying, Chakra Balancing and Aura Viewing.

Janine is a full member of the International Institute of Complementary Therapists.

Contact details:

Mobile: 0408 025 28

Email: Janine.donnellan@gmail.com





The Origins of Fairies

By Ellen Castelow

Most of us think of fairies as tiny creatures, flitting about on gossamer wings, waving a magic wand, but history and folklore tell a different tale.

When belief in fairies was common most people didn't like to mention them by name and so referred to them by other names: the Little People or the Hidden People.

Many explanations have been given for a belief in fairies. Some say that they are like ghosts, spirits of the dead, or were fallen angels, neither bad enough for Hell nor good enough for Heaven.

There are hundreds of different kinds of fairies - some are minute creatures, others grotesque - some can fly, and all can appear and disappear at will.

The oldest fairies on record in England were first described by the historian Gervase of Tilbury in the 13th century.

Goblins and other hobgoblins are guardian fairies. They are useful ones and do housework and odd jobs around the house. In Aberdeenshire, Scotland they are hideous to look at, they have no separate toes or fingers and in the Scottish Lowlands they have a hole instead of a nose!





Banshees are less common and more sinister, they usually only appear to foretell a tragedy. In Highland tradition the Washer-by-the-Ford, a web footed, one nostrilled, buck toothed hag is only seen washing blood-stained clothes when men are about to meet a violent death! Goblins and Bug-a-boos are always malignant - avoid them if possible!

Most of the nature fairies are perhaps descendants of pre-Christian gods and goddesses or are the spirits of trees and streams.



Black Annis, a blue-faced hag, haunts the Dane Hills in Leicestershire and Gentle Annie who governs storms in the Scottish lowlands, are perhaps descended from the Celtic goddess Danu, mother of Ireland's cave fairies. Mermaids and mermen, river spirits and spirits of pools, are the most common nature fairies.



Marsh gas makes the flickering flames that hover over marshy ground and gives rise to the belief in Jack-o-Lantern. Jack-o-Lantern, or Will-o-the-Wisp, is a highly dangerous fairy that haunts marshy ground, luring unwary travellers to their death in the bogs!



Belief in fairies has not completely died out. As recently as 1962 a Somerset farmer's wife told how she had lost her way on the Berkshire Downs and was put on the right track by a small man in green who appeared suddenly at her elbow and then disappeared!

A woman on holiday in Cornwall with her daughter came across a small green man with pointed hood and ears. They were so alarmed they ran for the ferry, cold with terror. Another eye-witness account in the 20th century - so do we believe in fairies? I wonder!

<http://www.historic-uk.com/CultureUK/The-Origins-of-Fairies/>

Make your own Fairy Garden



Fairy gardens—a new take on an old favourite, the terrarium—are tiny worlds complete with miniature furnishings, fairy-scale plants and plenty of mystique.

Just a touch of inspiration, a cute container, some plants and a few accessories are all it takes to get the magic of a fairy garden growing.



Plants in the basket include a violet (*Viola*) at the front left, plumed asparagus, ivy, tiny ajuga and grasslike *Armeria*.

Do it yourself -Pick a container Be creative, but allow proper drainage to Pick a container. Be creative, prevent soggy roots. Terra-cotta pots with saucers work great, and you can hide them inside a larger container, like a fun picnic basket.

Add soil. Use quality potting soil that provides nutrients plants need.

Select plants. Herbs are a smart choice because they stay small with just a little trimming, grow easily and offer wonderful fragrance. Thyme (*Thymus praecox* 'Minor') is a convincing groundcover, ornamental onion (*Allium senescens* 'Glaucum') makes a perfect little hedge, creeping savory (*Satureja spicigera*) can be shaped into a small bush and lemon-scented geraniums (*Pelargonium crispum*) serve as sweet little trees. Other top picks: firecracker plant, lavender, dwarf licorice, marjoram, dwarf myrtle, oregano, rosemary and sage.



Accessorise, create paths and seating areas—and add miniature fences, furniture, pots and garden tools.

Invite fairies to move in, and/ or pick characters at a fairy garden supplier.

<http://www.midwestliving.com/garden/container/miniature-garden/>



DRAGON ATTUNEMENT WORKSHOP

DragoArt.com

The Dragon is a celestial being that can take on a multitude of forms and energies and inhabits many dimensions throughout the cosmos. The Dragon represents the unknown and the hidden energy within nature.

The wisdom of the dragon is symbolized by the treasure it guards. To find this wisdom and knowledge one must search his/her inner aspects and in the unknown.

The dragon also represents the Kundalini, the force that is hidden inside us, which for the most part lies dormant waiting to be activated. The Dragon path strives to make this unconscious force and knowledge conscious. The symbol of the dragon and the myths about it carries information about how the unconscious can become conscious and how one can evolve. You are now on the threshold of a great journey, let go of your restrictions and let the dragons guide the way.

The Dragon Attunement is a process of attuning to a particular element of the dragon and can be compared to attuning yourself to a particular frequency like you would do if you were trying to find a particular channel on a radio station. This year we are attuning to the Element of Water.

Where: Girl Guides Hall, 129 Loftus Ave, Loftus NSW 2232

When: Sunday 12th February 2017

Time: 10am – 4pm

Cost: \$70

Please bring lunch to share. Morning and afternoon tea will be provided.

BOOKINGS ARE ESSENTIAL ~ please contact Janine to make your booking. Payment can be paid [HERE](#).



Salamander - A Summer Totem Animal

Salamander

Noun - A newt-like amphibian that typically has bright markings, once thought able to endure fire.

Salamander is a common name for the order of Caudata which includes 9 families, of which 8 are found in North America, but not in Australia. The species is related to frogs and Australia does have many species of frogs. Newt is a common name applied to certain members of a family of relatively small salamanders.

For all those people who have read about fairy tale witches casting spells with eye of newt, you now know what it is. Of course witches don't use eye of newt in their spells, I thought I should clarify that.

In the Devis world the salamander is a nature spirit that resides in fire and thus why we see salamanders as totems of fire, particularly the fiery orange-red kind. Medieval legend indicates salamanders had the ability to light bonfires. More than their smouldering

colouration, salamanders are also symbolic of rebirth because they can regenerate tails and toes. The summer solstice is also a time of regeneration.

Myth and legend

Legends have developed around the salamander over the centuries, many related to fire. This connection likely originates from the tendency of many salamanders to dwell inside rotting logs. When placed into a fire, the salamander would attempt to escape from the log, leading to the belief that salamanders were created from flames also if they should fall into a well, they could kill all who drank from it.

The association of the salamander with fire appeared first in Ancient Greece, where Pliny the Elder writes in his Natural History that "A salamander is so cold that it puts out fire on contact. It vomits from its mouth a milky liquid; if this liquid touches any part of the human body it causes all the hair to fall off, and the skin to change colour and break out in a rash] The ability to put out fire is repeated by Saint

Augustine in the fifth century and Isidore of Seville in the seventh century.

In Hermetic teachings, there are four orders of elements and each has a ruling elemental over it:

Spirits of Earth - Gnomes

Spirits of Air - Sylphs

Spirits of Water - Undines

Spirits of Fire - Salamanders.



Fire – Salamanders – Elementals

The Salamanders are the spirit of fire. Without these beings, fire cannot exist. You cannot light a match without a salamander's being present. Some people have seen them as small balls of light, but most commonly they are perceived as being lizard-like in shape and about a foot or more in length.

The salamanders are considered the strongest and most powerful of all the elementals. Their ruler is a magnificent flaming being called Djin.

Salamanders have the ability to extend their size or diminish it, as needed. If you ever need to light a campfire in the wilderness, call to the salamanders and they will help you.

It has also been said that salamanders (and the other elemental beings) can be mischievous at times. For example, a fiery

temper and inharmonious conditions in a person's home can cause these beings to make trouble. They are like children in that they don't fully understand the results of their actions.

Salamander as a Totem Animal

Despite being associated with fire salamanders are in fact amphibians, which in Latin means "double life." Although Salamander is primarily a creature of water, in magical traditions it relates to the element of fire, an agent of transformation. Thus, this power animal can help those who feel stuck become re-energized and renew their dream with the fire of passion.

Salamanders can fit within each of the elements as they are born in water, and in their "second life" live and breathe on land. In many ways the life cycle of the salamander relates to inspiration. The visions of that which we want to achieve are first ideas, often seeming as hard to grasp as water. To fulfil them, we must bring them into physical reality, for which the earth element is also a symbol.

So often it seems the magic of our first vision gets lost when we transform it to the practical reality of accomplishment, but this may be because we haven't been flexible enough in terms of adapting to this new environment. We can learn how to adjust to a new element with the help of Salamander Medicine. The salamander comes to those who are in need of change in their lives. The salamander evolutionary feat to observe, and as such, it asks us to evolve in our own lives.

References:

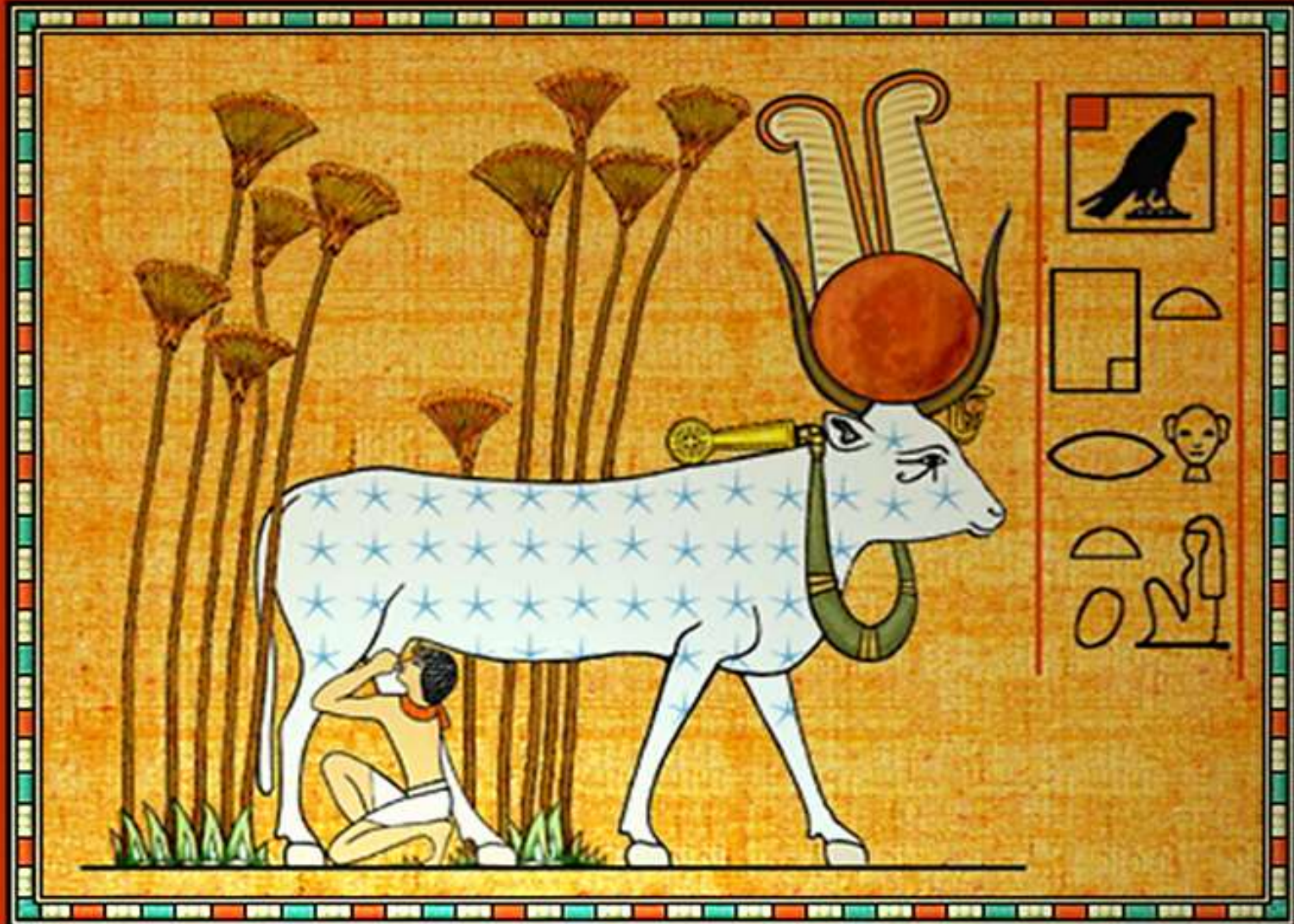
<http://www.whats-your-sign.com/summer-solstice-symbols.html>

[https://mara-](https://mara-gamiel.blogspot.com.au/2009/07/salmander-totem-animal.html)

[gamiel.blogspot.com.au/2009/07/salmander-totem-animal.html](https://mara-gamiel.blogspot.com.au/2009/07/salmander-totem-animal.html)

<https://www.reference.com/art-literature/salamander-s-relation-fire-according-mythology-2647974eb74d3a1e>

http://www.bibliotecapleyades.net/mapas_ocultotierra/esp_mapa_ocultotierra_6a.htm



Legend of Hathor

By Judith Page

Hathor was known as Het-Hert and Hetheru, Athyr, Lady of Malachite, and Lady of Turquoise. Her worship originated in pre-dynastic times (4th millennium BC).

She was the matron and embodiment of what were considered the pleasures of life 5,000 years ago - and which for many, continue so to this very day: joy love, romance, fertility, dance, music, alcohol and perfume.

Although she was inherently connected to the female of the species, Hathor cannot be considered only a women's deity as she also had a large and devoted following among men. As she was connected to metal, she held spiritual dominion over the Sinai Peninsula, and was responsible for the success and well-being of the mines in that area. Hathor was intensely worshipped by male miners and

soldiers, as she was by women in childbirth or young girls wishing for husbands. Both genders readily recognized the sacred divine within her seductively vibrant joyous beauty.

The name Hat-hor means 'Hut of Horus' but may not be her original name. The link with Horus can be traced back to the Narmer Palette where Hathor is depicted at the top of the famous palette overseeing the events detailed therein. In the centre of the palette is Narmer wearing the white crown of Upper Egypt whose symbol is the flowering lotus. To the right of the king is kneeling a prisoner, who is about to be struck by the king. Above the prisoner is a falcon, representing Horus, perched above a set of papyrus flowers, the symbol of Lower Egypt.

Since that time Hathor's principal form was that of the cow, and was strongly associated with motherhood. At the temple of Queen

Nefertari at Abu Simbal, the queen is depicted as Hathor on many of the wall relief's, and in another sanctuary Rameses II, her husband is shown receiving milk from Hathor the cow.

At the time a child was born in ancient Egypt, seven Hathors (somewhat like fairy godmothers) would appear to 'speak with one mouth', and decide the child's destiny.

Hathor's own child was Ihy, who was worshipped in Dendera with her and Horus-Behdety. Like his mother, Ihy was a god of music and dancing, and was always depicted as a child bearing a sistrum.

Hathor, the female companion of Apis the Bull, was often pictured as a naked lady, having horns and holding the Sun on her head. Like Sekhmet, Hathor was closely connected with the sun god Ra of Heliopolis, whose "eye" or daughter she was said to have been.

In her cult centre at Denderah in Upper Egypt, she was worshiped with Horus. At Dehr el-Bahri, in the necropolis of Thebes, she became "Lady of the West" and patroness of the region of the dead.

Her other title 'Lady to the Limit' means in every sense 'limit' to the edges of the known universe, and Lady of the West is a perfect devotional title in her funerary stance behind Osiris welcoming the dead to their new home.

She is also associated with numerous other Egyptian goddesses and has also been absorbed into the many characteristics of Bat, another pre-dynastic cow goddess (as depicted at the top of the Narmer Palette).

Occasionally she may appear fierce and terrible, but she is never unattractive. Her imagery too is unlimited. It is interesting to note that Hathor habitually takes more forms than perhaps any other ancient Egyptian deity, most of whom are limited to one or two shapes. In terms of imagery, she is possibly the most fluid of all matched only by the notorious god Set.

Her connections with the fiery temperament of Sekhmet are softened when associated to Bastet.

The cult of Hathor is unusual, whereas most other Neters have priests of the same gender as the patron Neter, both men and women were her priests. Many of them were artisans, musicians, and dancers who turned their talents into creating rituals that were nothing short of works of theatrical art. Music and dance were part of the worship of Hathor like no other deity in Egypt. Hathor herself was the incarnation of dance. Stories were told of how Hathor danced before Ra to cheer him up when he was in despair.

Around 400 BCE Plato shared this profound belief, 'Music is a moral law. It gives soul to the universe, wings to the mind, flight to the imagination, a charm to sadness, gaiety and life to everything. It is the essence of order, and leads to all that is good, just, and beautiful, of which it is the invisible, but nevertheless dazzling, passionate and eternal form.'

About Judith Page



©Joe Page

Judith Page was born in Australia. She graduated from Chelsea School of Art in London. She is a respected painter specializing in representations of Egyptian Pantheon groups with a strong emphasis on astronomy. Her work has featured on the covers of numerous magazines and books. She is a great storyteller and poet, and brings mystery and magic alive.

Other books by Judith Page

Song of Set
Song of Bast
Song of Meri-Khem
Song of the Ibaru
Theft of the 7 Ankhs
Pathworking with the Egyptian Gods
Invocations to the Egyptian Gods
Angelic Magic
Realm of Angels

Path to Hathor Journey to Denderah Temple (Temple of Iunet)

'Let your imagination unfold, glimpse a land shrouded in mystery, and answer the call of the Egyptian gods. This powerful book enables you to make contact with the Egyptian gods and goddesses - and become enlightened through the profound spiritual truths of an ancient land. Combining astral travel techniques with a sensuously reconstructed diorama of ancient Egypt, this book invites you to begin a soul-level initiation and explore the consciousness-awakening tool of inner pathworkings to connect with each deity.'

Celebrate your nurturing, feminine aspect with Isis; tap into the deep wisdom and strength of Horus; and, exult in life's joys with Hathor, patroness of music and dance.'

Extract taken from 'Pathworking with the Egyptian Gods' by Judith Page & Jan A Malique

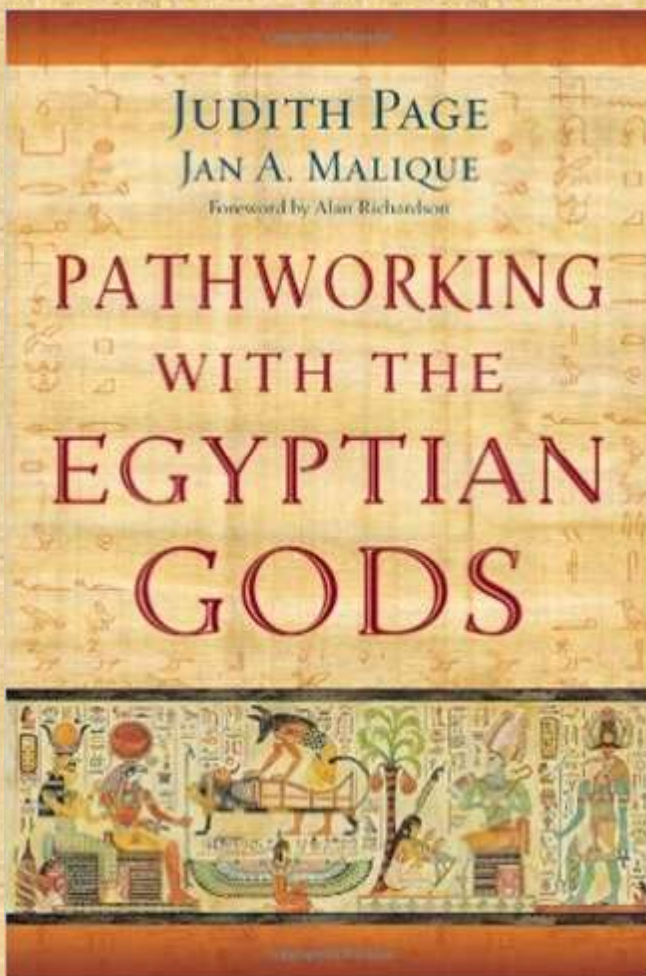
Don your white robe and tie a yellow cord around your waist. This will be in respect of the Neter you will be working with.

Build your pylons and make the sign of the ankh in the air above your head. On the lintel of the portal hieroglyphs of Hathor will appear:



Commit them to memory. This symbol is charged, look at each mark and take it within. As you utter your secret name your journey takes you to Denderah Temple. This is a gateway that will take you to the heart of Hathor's realm. You will learn how to focus on her energy as you are drawn in.

A sensation of pure joy overtakes you as you approach the magnificence of White Denderah. It stands in solitude upon a blackened mound. From far off you see the façade, large, bare, and sober, rising, in a nakedness as complete as that of Isis rising from the Nile, out of a plain of brown, alluvial soil that is broken only by palm-trees that



contrast sharply with the white walls of the temple, their fronds throwing a feathery embrace across the earth. The silhouette of a lone hawk breaks the expanse of endless blue skies. The Great Horus keeps watch over his lady.

You look around for your guardian Djehuty but he is nowhere to be seen. The walls around you soften and you feel a current of energy pulsating from within. This temple holds you spellbound and as soon as you enter you feel the touch of the lotus. It is as if an invisible and kindly hand has swept a blossom lightly across your face and down towards your singing heart.

The years drop away from you, as do all cares and concerns and you sense that every golden hour will bring another drop of wondrous essence that sets time at defiance and charms sad thoughts away. This is a special place indeed.

You enter the temple, and stand awestruck in the first hall. It is mighty, magnificent, and full of enormous columns from which faces of Hathor look down to the four points of the compass.

The brightly decorated walls around you are proof of the builders and artisan's love and devotion to their goddess as they hailed and worshipped her, with the purity of white and the sweet gaiety of turquoise. The depth of such emotion has sanctified the very ground the temple stands upon.

You look up again at her face, it is a delicate oval shape; from under a perfect brow slanted green eyes gaze down at you. Her full lips smile protectively upon you. You reach out to touch the column, and as you extend your hand you feel a stirring behind you, and hear the faint jingling of temple sistrums! You turn around, and standing before you in the entrance to the 2nd hall is a statuesque woman, perfumed and clothed in a diaphanous robe of white, blue and orange. The air around her is a mix of jasmine, musk, vanilla and patchouli. Her warm smile envelops you totally as does the welcome in her eyes. In her left hand she holds a bronze mirror, and in her left a sistrum, which she shakes gently.

'So beautiful to behold' you murmur to yourself. Her kohl-darkened green eyes sparkle, skin of olive, and hair as black as a night sky. It is the goddess Hathor who speaks:

'I am Mistress of lunet, bountiful Mother. My breasts have suckled Gods and Kings. I am the wild cow of the rushes whose dance excites all living things. I am the fiery power of the Wadjet that spreads terror of the King through all the land.'

'I am part of the first great culture to infuse its entire society with the magic of music and dance. My people have enjoyed life to its fullest, and no celebration in Khem would have been complete without music and dancing. So come with me pilgrim, we have a banquet to attend.'

As if by magic, the shaking of her sistrum brings the very walls to life. The wall relief's holding the musicians with flutes, harps, lutes, drums, cymbals, wooden clappers and tambourines, dancers now stream out passing you laughing in gay abandon throwing perfumed drenched flower petals for the goddess to walk upon.

The 2nd Hypostyle Hall is now filled with the happy company. Against a sidewall is a long table laden with sumptuous dishes of foods. The smell of freshly baked bread from emmer wheat reaches your nostrils. A gathering of guests have arrived and are now making their way towards the banquet table they are dressed in semi-transparent garments, on their wigged heads they wear unguent perfumed wax cones. Between them, weave Muu-Dancers wearing short white kilts and on their heads, strange reed crowns. They perform amazing feats, leaping twirling and bending their bodies in time with the music.

Helping himself to figs stuffed with gazelle you see your friend and guardian Djehuty. His keen eyes survey the foodstuffs; roasted wild fowl sprinkled with tiny toasted seeds, crescent shaped almond biscuits, cakes baked with dates and sweetened with golden honey, pomegranates their skins cut revealing the luscious fruit within, great jars of barley beer and ewers of wine. Full luscious grapes are arranged in pyramidal shapes amidst piles

of palm nuts and almonds. Choice cuts of roasted oxen are artfully arranged upon another table.

Lotus flowers and flower collars are being handed out by young girls scantily dressed in just little beaded belts. Their golden bodies glisten with perfumed oil, attracting admiring glances from both male and female guests. Your head is swimming with excitement at the whole spectacle. Djehuty and Hathor laugh, but not unkindly, at your wonder.

The goddess takes your hand and leads you to the centre of the festivities and now dances with her arms raised and curved towards her head. In her left hand she still holds the bronze mirror, and now gazes into it smiling and sways in time to the rhythmic throng of a solo drumbeat and you find yourself copying her very movements. Waves of energy flow up from the ground and surge through your body that serve to evoke ancient powers and memories. The drumbeat takes you deeper and deeper into other levels of consciousness. No other sound exists except for the drumbeat.

The guests look on smiling and clapping their hands with joy as you continue to spin and twirl and are at one with the dancers. They are content to just witness the spectacle, it would not do to abandon all decorum and become part of the dance. Not in public anyway, such pleasures are best kept for the bedroom.

You hear two lovers say:

‘How sweet is the name of Hathor! Without her to bring us together, life would be unbearable, like the wastes of the Red Land which receives no rain.’

A merry musician chimes:

‘Look kindly upon me Mother as I play thee this song, and drain many jugs of beer to thy honour, all night long.’

The notes from the musicians contain multiple overtones that are steeped in powerful shamanic spiritual traditions. These notes impact upon your senses causing the air around you to form a prism causing white light to refract the different colours of the rainbow. You now begin to sing. Your voice breaks up

the harmonics of the musicians into specific sound frequencies that cascade the colours around you like a wonderful waterfall. You have found your signature note and the Universe reflects it back to you.

You are now dancing alone, but to a different rhythm. Gone are the guests, dancers and musicians. Gone too is the joyous beautiful goddess Hathor. Djehuty is now by your side as you still gently sway. He places his hands softly on your shoulders as if to say ‘it is time to awaken from the dream’. Before you now stands a woman with a strained expression that suggests to you more than gravity – almost anguish – of the soul and the spirit. Was this an echo of the ideal of joy in the time of the Ptolomies or in an age long before Khemit had felt their presence on its soils? That rapturous age of laughter, song and dance, and carefree spirit has faded.



The Temple of Hathor still holds the pale colours that here and there sing, but the rest is broken almost haggard, greyish whiteness of this first hall with the roof now blackened with the soot of ancient Christian fires as they sent their protestations to their one god in heaven.

Hathor’s face looks down upon you, weary and sad the Hathor of Denderah, the sad-eyed dweller on the columns of the first and second halls. Ruby red tears flow from her eyes. The tears that she has shed over millennia have dried up only to give way to the sacrifice of her life-blood. At your feet you look down at a discarded mirror once consecrated to her, and hear Djehuty say:

‘She will not see what she has become. Had she a veil, she would surely cover the face that

witnessed the cruel evidence of early Christian ferocity.'

From the gloomy courts you hear sobbing and whispering:

'Once, I was worshipped, but I am worshipped no longer.'

Civilisations ebb and flow and great empires rise up from the dust and crumble back into nothingness once their time has passed, and their glories forgotten. You know change is inevitable but that does not lessen the pain of loss – of those you have loved, of precious memories and knowledge. Where does it all go? Your heart weighs heavy with the tears you have not yet shed for your beloved Neters.

'O wondrous Hathor I feel your loss, and lament the passing of that once great age when your grace and power flowed through the life blood of this land. You have not been forgotten, as long as I and other worshippers have breath you shall live within our hearts and be worshipped with the passion you deserve.'

Djehuty is now standing behind you, he can add nothing to your thoughts, just reminds you that is time for you to go. In silence you sadly construct your pylons and walk through the portal to your world of familiar regions. Utter your secret name to the gods and seal the door behind you.

Guru Medicine Massage & Healing



A professional & caring natural healing clinic

Located in Caringbah and serving the Sutherland Shire & surrounding community over 25 years.

Professional therapy in a tranquil setting.

STRESSED & TIRED?
ACHES & PAINS?
HAVEN'T BEEN LOOKING AFTER YOURSELF?
SEEKING ANSWERS IN YOUR LIFE, UNSURE WHICH DIRECTION TO TURN?

Mobile: 0450 008 442

Mon/Tues 9:30am – 5:30pm
Wednesday 1:30pm – 7:30pm
Thurs/Fri 9:30am – 7:30pm
Saturday 9:30am – 3:00pm



Jingle All The Way ~ Making Your Own Silver Branch

By Janine Donnellan

Music is strongly linked to ritual all over the world, and it provides us with the means of communicating a wide variety of emotions which is sometimes difficult to verbalise. Music can be expressed simply in ritual whether it is through the instinctive movements of clapping or stomping our feet or the banging of a drum. The first musical implements used in rituals at the beginning of human evolution were probably sticks used on other sticks or bones or stones.

The Silver Branch is also known as a bell branch or apple branch and is a percussion instrument that works in a similar manner to the shamanic rattle and the drum.

"Craebh ciuil" is Irish Gaelic for musical branch. In the Irish Druid tradition, the Silver Bough is cut from a magical Apple tree, where silver apple shaped bells played a mystical tune, which could lull people into a trance state. Druids could make contact with the Otherworld during a trance enhanced by this silver apple bough.

Traditionally a silver tree branch contained silver or golden apples that sounded like bells attached to it. Sometimes three, six or nine apples hung from the silver branch.

Making Your Silver Branch

Apple, hawthorn and oak were traditionally used for the making of a Silver Branch, but any tree you feel a strong connection to will do. If you are removing a branch from a tree make sure to thank the tree before taking the branch. If you don't want to use a branch you can use a length of dowel instead.

After stripping the branch and sanding it, you can then paint your branch silver or you may prefer to wrap it with silver thread or ribbon.

You can then add bells tied on to the branch with ribbon or wire; choose a multiple of three, as three is a very sacred number in Celtic mythology. Jingle bells and horse bells are most common, but any type of bell is good. Silver, gold, copper or bronze bells are traditional. The bells should have a pleasing sound that is clear in tone so try out different bells to find a sound that feels right for you.

You can attach the bells close to the branch or allow them to dangle. Add any carvings, painted symbols, feathers and other decorations that appeal to you. You may want to add your magickal name in ogham or runes on the handle.

References:

<http://wolfdancer.tripod.com/index23.html>

<http://walkingthehedge.net>

<https://sites.google.com/site/lookingforthegoodinit/ogham/10-q-quert-apple>



Mediumship & Psychic Development Circle

The Development Circle will support you in understanding how your intuition communicates with you as well as the opportunity to practice giving and receiving Spiritual Messages.

Over the course of time you will experience a wide variety of techniques: Mediumship, psychometry, channelling, intuitive skill building, automatic writing, remote viewing, sensing murder and missing persons, healing methods, meditation, aura clearing and psychic protection techniques are just some of the many topics covered within this circle.

These classes will be facilitated by Janine Donnellan from SOL Illumination (formerly Soul Searchers Spiritual Centre).

Classes are conducted on a fortnightly basis (5 nights a term).

Where: Sylvania Cottage, Venetia Street, Sylvania 2224. The cottage is on the corner of Venetia & Holt Street. There is plenty of allocated parking in Holt Street.

Dates: Fortnightly on Tuesday nights (14 February, 28 February, 14 March, 28 March, 11 April 2017)

Time: 7:30pm – 9:30pm.

Cost: \$180 per term

BOOKINGS ARE ESSENTIAL ~a non-refundable deposit of \$50.00 is required for all bookings. The final payment can be made at the workshop. Deposit can be paid [Here](#)

If preferred, full payment can be made up front via a PayPal invoice which Janine will send when you contact her to arrange your booking. You can contact Janine on 0408 025 268.



2017 Abundance Spell Casting

Instead of making a New Year's resolution, that will probably be promptly broken, Cast a Spell to create a desirable reality outcome for you in 2017. By focusing your attention on changes you would like to manifest, you set the wheels in motion to align reality to your desires.

The main idea of this spell is to use the visual "key" of the 12 houses of the Zodiac like a clock to help you set your intention for the 12 months of this year. You will cast a simple spell and light a candle for each clock position starting with Aries and ending with Pisces. Once the whole Zodiac Wheel has been

completed, you will bless your beautiful Circle of Lights and set the spell into motion.

Zodiac Correspondences to help you set your intention for each house of the Wheel.

- 1 – Aries – Seeds, new beginnings, inspiration, new projects, birth.
- 2 – Taurus – Earthly success, material wealth, physical health.
- 3 – Gemini – Communication, messages, information.
- 4 – Cancer – Relationships with self, other people and higher forces.

5 – Leo – Art, romance, luck, free will, creativity, love.

6 – Virgo – Service, family, community, organisation.

7 – Libra – Harmony, balance, negotiations, resolutions.

8 – Scorpio – Magic, philosophy, sex, death, alchemy.

9 – Sagittarius – Spirituality, universal consciousness, law, science.

10 – Capricorn – Power, authority, fame, empire building.

11 – Aquarius – Renewal, evolution, transcending the old, trans-personal.

12 – Pisces – Soul, karmic matters, mysteries, far journeys.

Use the 12 houses of the Zodiac below and arrange the houses in a circle on your Altar or place the whole Wheel on your Altar.



Spend some time thinking about what you wish to manifest in each house in the New Year and make a note of it on a spare piece of paper. Be clear in your mind what you are going to ask for on each one of the positions.

For example, 1, Aries, is about new beginnings. What do you want to begin or start afresh? Make up your mind and write it down.

When you are ready to begin the spell, relax, loosen up any tense body parts, take three deep breaths and evoke:

On this night,
I bless the year to come
My prayer be heard,
My will be done.

Beginning in Aries, write your desire in the Aries section and chant:

Lady and Lord
I ask of thee:
Bring (add your desire) to me
With Harm to None
So Mote it be!

Light the first candle, and place it in the Aries position. Take a deep breath in and out and clear your mind.

Next move to the Taurus section and continue in this manner writing your desire on the Wheel, chanting and lighting a candle for each section until the whole Circle of Lights is complete.

Place both hands with palms extended over the Circle of Lights and move them in a clockwise direction. Seal the spell by chanting:

On this night
I bless the year to come
My prayer was heard,
With harm to none, it is done!

Snuff the candles or if safe/possible, leave the candles to burn out through the rest of the night.

By StarFields

Adapted by Rowan Morgana 2015

Sacred Wicca



Lisa Winter - Visionary Artist and Spiritual Advisor

Now taking bookings for readings and shamanic healing at MacArthur Holistic Healthcare. <http://macarthurholistichealthcare.com.au/> .Available times are from Monday- Friday. 10:30 am -8pm So I am flexible and can work with you to organise a time that suits us both. To book a time you can contact me via [Facebook](#) or email lisawinter84@gmail.com

I am available for the following services:

- Psychic Fractal card readings
- Commissioned Artwork
- Sacred Geometry energy drawings
- Spiritual Guidance sessions
- Guided Meditation
- Shamanic energy cleansing.
- 30 min sessions - \$45
- 1hr sessions - \$80

For more information on me or my work please go to my website lisajwinter.com



Janine Donnellan is conducting Tarot Readings & Healings at Zumbador at Woronora!

- Reiki Master
- Shamanic/Energetic Healer
- Parapsychologist
- Space Clearing Consultant
- Tarot Reader

Healing Sessions:

Janine's healing sessions will incorporate a combination of Chakra Balancing and shamanic practices.

The healing sessions are designed to help you balance your body, emotions, mind and Soul. Janine is a full member of the International Institute of Complementary Therapists.

Tarot Readings:

Janine Donnellan has been conducting tarot readings for over 15 years and has an incredible gift for getting to the heart of the matter and can assist you to see clearly the issues so you are able to take the appropriate action for a better future.

Location: Zumbador, 2 Prices Circuit, Woronora NSW 2232

Janine is also conducting readings in Caringbah by appointment.

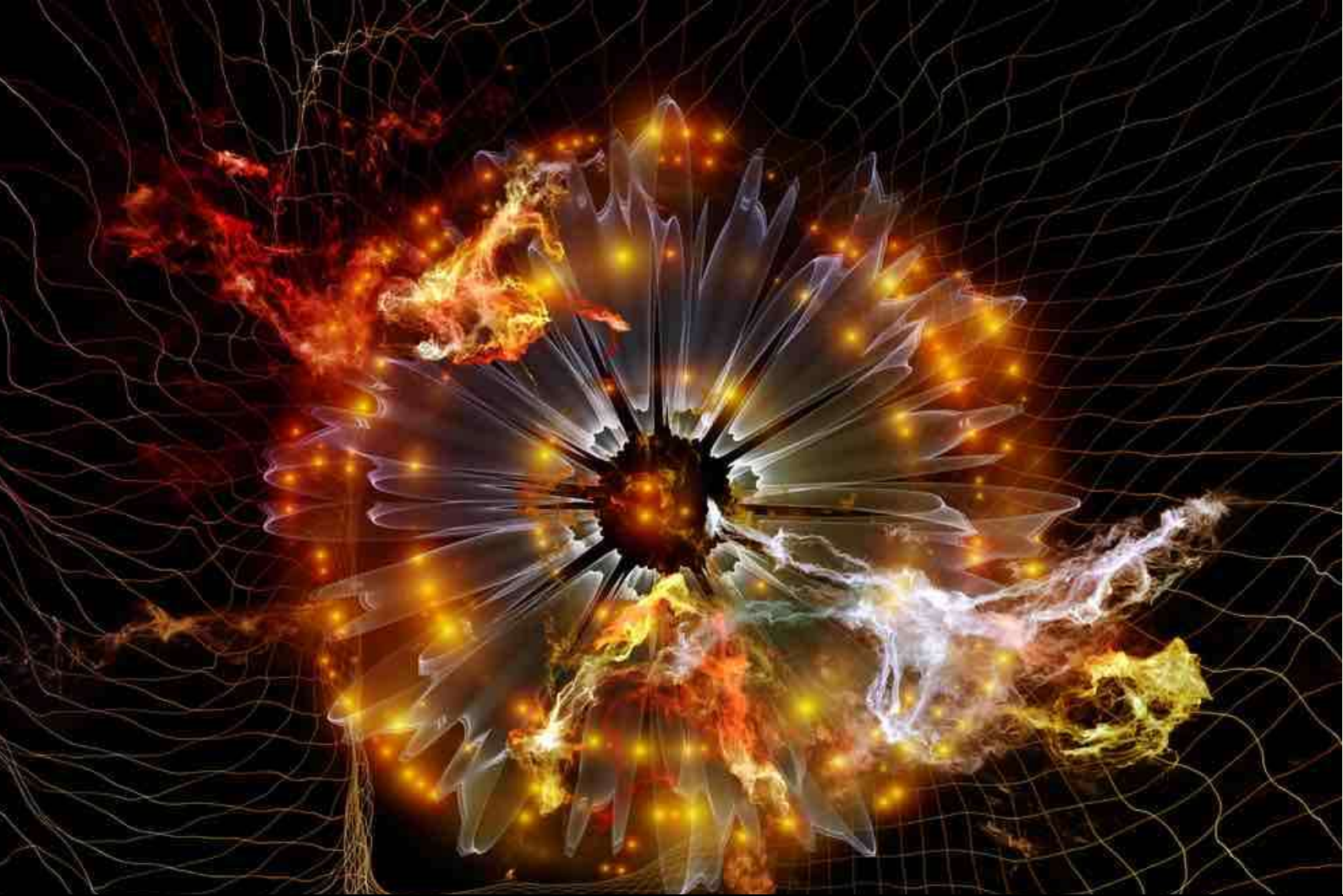
Duration: 60 minutes

Bookings are essential!

Cost: \$110.00

Contact 0408 025 268 or Email: janine.donnellan@gmail.com





5D Astrology Report: 2017

A 1 Year of Genesis – dimensional flux

There is hope in the darkness for all things will be made new.

Revelations 21: 5

By Lorna Bevan

Presciently, the theme of my 2016 5D Forecast – “A Change in Frequency” written in December 2015 – proved beyond true and now we are shape shifting into 2017 “A 1 Year of Genesis: dimensional flux.” To borrow a timely Star Wars idiom, in 2017 we can expect a major disturbance in the force as we are now in a radically different astrology straddling the seismic fissure between the 2007-16 Uranus/Pluto Demolition Squares and the 2016-23 Uranus/Eris/Pluto/Haumea eyes wide open awakening.

The years between 2017- 2023 are stair steps through the Connected Universe into the Age of Aquarius when Pluto enters the sign of the Futurist. So, what can we foresee for 2017? Deep breath:

- **The chaos factor as the new normal**
Increasing dimensional flux
- **Volatility, uncertainty, complexity and ambiguity**
- **Old template drop-off**
- **A separation of worlds and time-lines – Wizards and Muggles?**
- **Shifts in Life Streams**

- Entanglement with Creation/Source
- A radical expansion of the higher mind / breakthroughs in science, astronomy, medicine and technology
- A Paradigm Shift + evolution of unity consciousness
- Tribes and groups forming and reforming like cells to shape solutions
- Personal Creative Unfolding
- Massive Transformational Purpose

And if those frames and concepts sound weird or far-out to you now, by the end of 2017 you'll have experienced them in your own life. The magic moments come when you glimpse universal principles through personal experience.

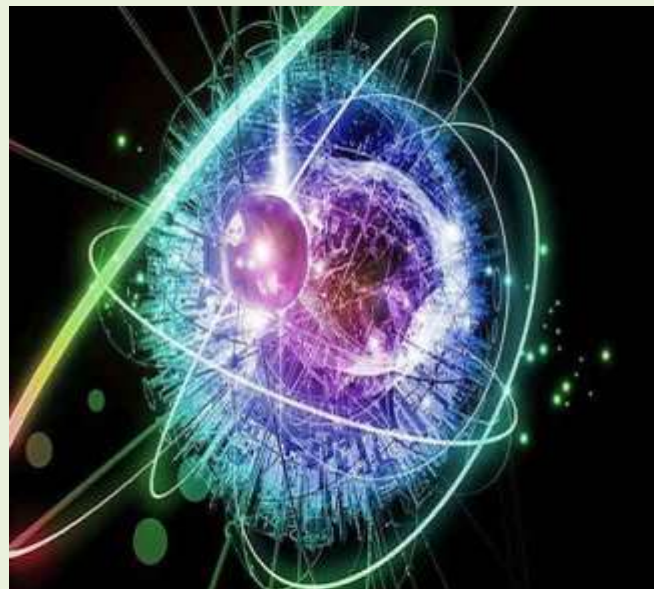
2017: A 1 Year of Rising from the Ashes

A radically new Creation Cycle begins on January 1 2017 aka 1:1:1 and you are already feeling the highly-concentrated creator frequencies of the new energy resonances, resurrections and revelations of the higher mind. Although it seems as if there no time space between the completion of the old and the start of the new and you're feeling like you're spinning, falling, rising, coming apart at the seams and yet so excited to really get going creatively, be aware that January 1st is not an overnight wipe the slate clean wave of a magic wand but an emergence from the Zero Zone into a field of possibilities. What you choose will arise out of your Free Will. A generative sovereign question to ask yourself is: "How did I shape my reality in 2016 and do I like my results? If not, then what exactly am I going to do differently?" In the year ahead you move into many new physical reality alterations as the 1 vibration intensifies but you have to get there with ZERO attachments or expectations...in complete faith, but with a deep awareness that what lies just ahead is nothing like what lies just behind. Hold on to these reassuring thoughts:

- **The future is an incomplete equation**
- **You will never know this little again**

- You are doing the best you can, given the thinking you have that looks real to you
- You can think whatever you like

The Defining Astrology of 2017



We are now deep in the curve of a global, collective and personal Reset which is altering our physicality, our thinking, our emotional programmes and our spiritual DNA. The discovery of Deep Space Planets – Evolutionary Intensified Objects – is erasing then morphing the old binary separation between Inner and Outer planets into a psychosynthesis – a generative feedback loop from Self to Source and back again. "There's is a fundamental field of information that is the source of our consciousness. Consciousness is not an epiphenomenon of your brain, it's actually something that your brain is tuned into like a radio is tuned to a set of information." Nassim Hamein

The Light Returns

In 2017 Jupiter is the difference that makes the difference. The Light Bearer /Hierophant is retrograde in Libra between February and June and begins and ends the year connecting us to the Grid via outer and deep space planets. This is nothing less than Universal Law at work here, masquerading within our culture as chaos re-adjustment. Jupiter's esoteric purpose is soul fusion blending the dualities of head and heart, mind and love to

create wisdom. The Hierophant restores the Law of Life Mastery.

The Chaos Factor Amps Up

You say you want a revolution? The defining astrology of 2017 is the Cardinal T Square between Pluto/Uranus/Eris/Haumea/ Jupiter in aspect all year. The future starts here. Circled is the Cardinal T square between Pluto, Uranus/Eris and Jupiter conjunct Haumea. The esoteric planetary equation translates as: the Great Eliminator wired into the two Awakeners wired into the Light Bearer wired into the Harbinger of epochal events. These deep space planets have not aligned in this way since 1446 and this time around the long-term impact on world events is being supercharged by the revolutionary power of Uranus/Pluto and the truth dealing of Jupiter/Pluto. Volatility, uncertainty, complexity and ambiguity is the least of it.

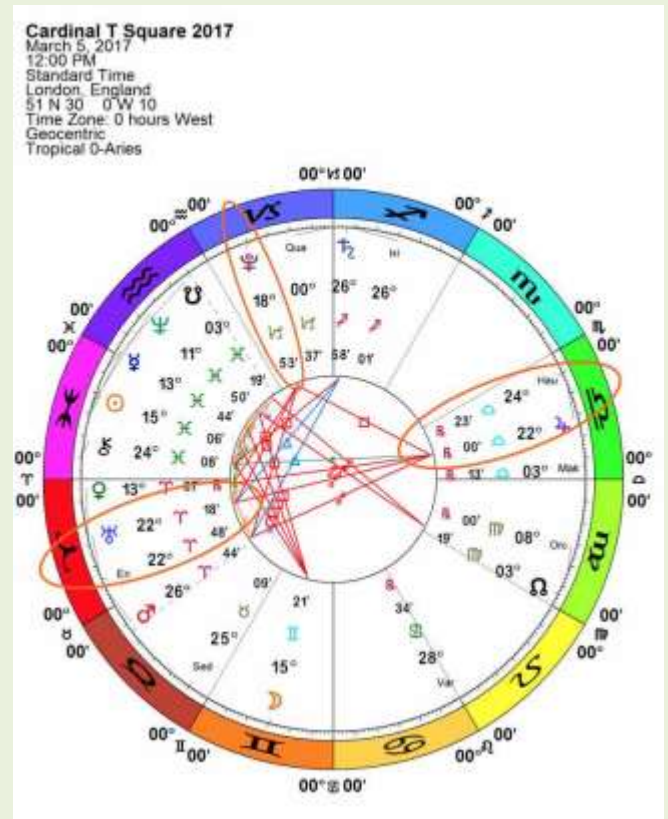
The 3rd exact Uranus/Eris conjunction in pioneering Aries arrives on March 17 2017 challenging us to come up with radically different answers instead of reiterating the past or seeking solutions that only patch up the status quo. This is a supremely potent aspect – it dynamited the shock and awe of 2016's astrology – associated with digital conditions, identity chaos and an explosion of self-discovery. These messengers of transformation bring growth by disrupting old patterns of thinking, beliefs and expectations, shattering the unexamined and comforting codes of “this is how we do things around here”.

Power Surges to the Grid

Jupiter square Pluto.

Playing for high stakes as power plays ramp up. Actions or decisions taken now have big repercussions especially on the world stage

30 March 2017 04 August 2017



Falling Through the Mirror

Saturn trine Uranus/Eris. Deepening the evolutionary burn, Lord of Time and Karma Saturn collaborates with Uranus to catalyse creative revolution, freedom with a purpose.

Conjuncts the Galactic Centre the core of our Galaxy at 27° Sagittarius 3 times disentangling any patterns that block change, fear progress, or irrationally cling to what is known. This Galactic Homing Signal from Source imposes its enlightenment upon us; we do not superimpose our desires on it. Keep the end in mind and the idea of the greater good in all decisions.

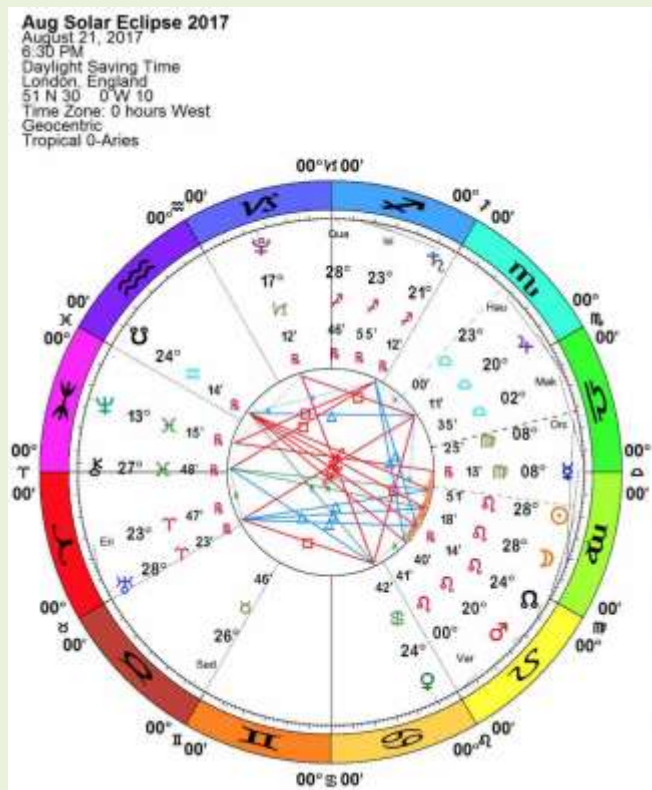
March 8 – May 5 – November 24

Spiritual Catharsis

- Chiron square Pholus
- Saturn square Chiron

Centaur Pholus and Chiron dissolve your own self-limiting rules and limitations, to make long overdue radical changes in your life, to pierce the veils obscuring your soul purpose then awaken to that purpose and live it out. Saturn with Chiron then grounds and concretises that purpose in the world.

April + November 2017



Back to the Future

The Eclipses move into Leo/Aquarius for the first time since 1999.

Taking us on to the Individual Unity/Universal Unity Polarity needing resolution via the unified field.

Think back. What changed in your life in August 11 1999? It will reappear in a different guise for another turn of the spiral.

Eclipse Dates:

Lunar	Feb 11 2017	12:33 am	22° Leo 28'
Solar	Feb 26 2017	2:58 pm	8° Pisces 12'
Lunar	Aug 7 2017	6:11 pm	15° Aquarius 25'
Solar	Aug 21 2017	6:30 pm	28° Leo 53'

Co-Creative Intelligence

Venus Retrograde in Aries

The Venus Pentangle begins a new heart based 8 year cycle with the Venus Star Point in Aries encouraging the quest for self-

identity, self-discovery and self-agency. This repeats one of the threads of 2017-the desire for personal sovereignty.

March 25 2017

Magical Technology

Uranus semi-square Neptune

Breakthroughs in technological innovation, via further discovery and synthesis of new, cleaner, and more sustainable technologies.

August + October 2017

How You Can Thrive in 2017

- Claim Personal Sovereignty- stop looking outside for help or answers. You're sourced and fuelled and funded by a renewable resource, which is within you. It never runs out. It is your Essence. It's your life.
- Evoke your MTP massive transformational purpose by making meaning and fulfilment more important than anything else. Are you a Wizard or a Muggle? Become the Code Breaker of your own soul's authentic and sacred purpose.
- TWYH- think with your heart as your EQ, your compass, your test/operate/test/operate: "If the brain is the radio's receiver then the heart is the dial tuning the radio to the frequency of your choice" Nasseim Hamein
- Welcome old template drop off – you learned the lessons, cleared the fears, and the old reality no longer applies. It will be clear to you that the old template is gone. Attachment to the past, who you were, the future/where you were going, identity, egoic structures, all drop away. Memories may remain; however,

the entanglement or emotional vibration is gone when you revisit the past.

- Realise that you cannot do the old things anymore, that the energy of everything really affects you in a different way than before. It's not an emotional experience, it's a "that inspires me, that depletes me, that contributes, that takes, that is open, that is closed, that is resistant, that is imposition, that is selfish/needy, that is awesome, that's not...."
- Be alert for unexpected shifts in your life stream as accelerated timelines overwrite the past. The dimensional flux synthesises parts of your Self you've never encountered before so your tastes, preferences, likes, dislikes, memories, allegiances and actions all change simultaneously. These are simply resolutions, resurrections or revelations of the higher mind. The blinking in and out of different states of consciousness is a physical sensation. It can feel disorienting, frightening or fascinating depending on your perspective.
- Let creative unfolding replace goals, plans or linear thinking-whole engagement. Become indifferently engaged. Passively dynamic. These ideas, this wisdom and this knowing do not come from striving, analysing or

willpower. They come from waiting, watching, listening, being curious, and making space. The quieter, more available you are, the more obvious the solution or the next step. There is nothing you can do to speed up the arrival of the insights or ideas and the harder you try the more counterproductive. Be willing to love and be loved unconditionally and to have your personal thinking about yourself and life disrupted, disturbed, and disrobed, revealing the creative source, potential, and power underneath it. Inhabit creative freedom – find your authentic voice. Cultivate your creative vision. Produce a product or service that lives inside of you. Create a way to share it with the world. Seek financial independence.

- Create safe places and gather your tribe to have radical conversations about uncertain futures. When we come together we learn how to heal. Invent and evolve platforms Creating as you go.

-

"Hope is not about proving anything. It's about choosing to believe this one thing: That love is bigger than any grim, bleak shit anyone can throw at us." ~ Annie Lamott



COSMIC ★ INTELLIGENCE ★ AGENCY
Consciousness * Intention * Astrology

Lughnasadh Full Moon Ritual at Spheres Of Light Loftus & Nowra - Friday 10th February 2017 at 8pm.



The celebration of Lughnasadh is time to pause, open yourself to the change of the Season so that you may be one with its energies. This is the time of the first harvest, to enjoy the fruits of your labour. This is a time to consider whether your result has equalled your efforts. The ideals of Leo and Aquarius come into their fullest expression at the Full Moon. As an individual, how fully are you expressing your life purpose?

Spheres Of Light's Full Moon Circles are open circles and anyone who wishes to experience a full moon circle is welcome to join us on the night.

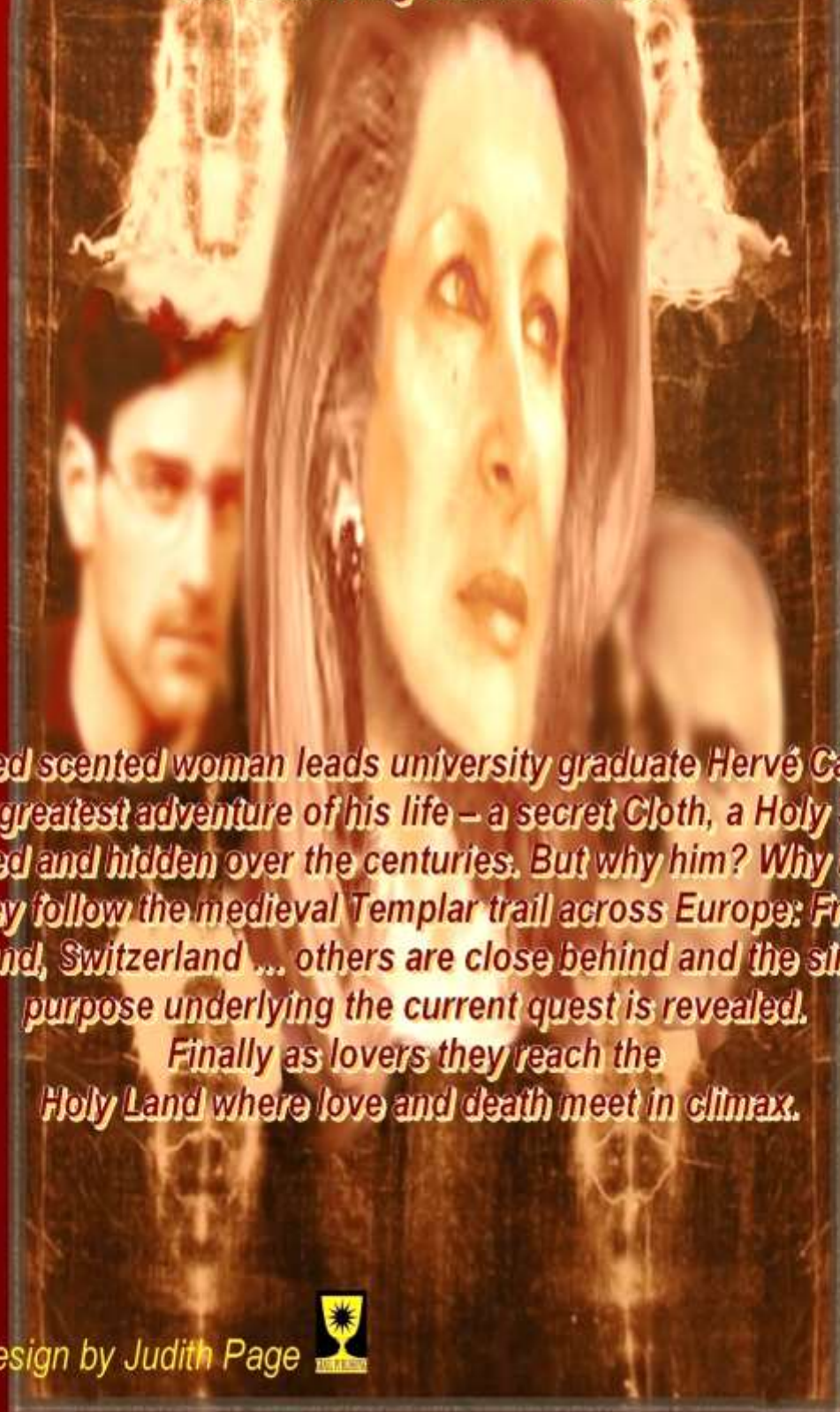
If you are new to the circles and wish to attend or would like further information please send an email to inquiries@spheresoflight.com.au for Loftus Circle or phone Janine on 0408025268.

Contact Nowra Circle at nowra.circle@spheresoflight.com.au

secret

SHROUD

*Knights Templar...spirit guides...tumultuous storms... suspicion...
manipulation... the Mandyllion... Frankenstein... DNA
and something that never died.*



*A veiled scented woman leads university graduate Hervé Caradec
into the greatest adventure of his life – a secret Cloth, a Holy Shroud,
moved and hidden over the centuries. But why him? Why her?
As they follow the medieval Templar trail across Europe: France,
England, Switzerland ... others are close behind and the sinister
purpose underlying the current quest is revealed.
Finally as lovers they reach the
Holy Land where love and death meet in climax.*

Cover design by Judith Page




secret

SHROUD

Judith Page & Paul F. Newman





secret

SHROUD

An undying love shrouded in history

Judith Page & Paul F. Newman

secret SHROUD

An undying love shrouded in history

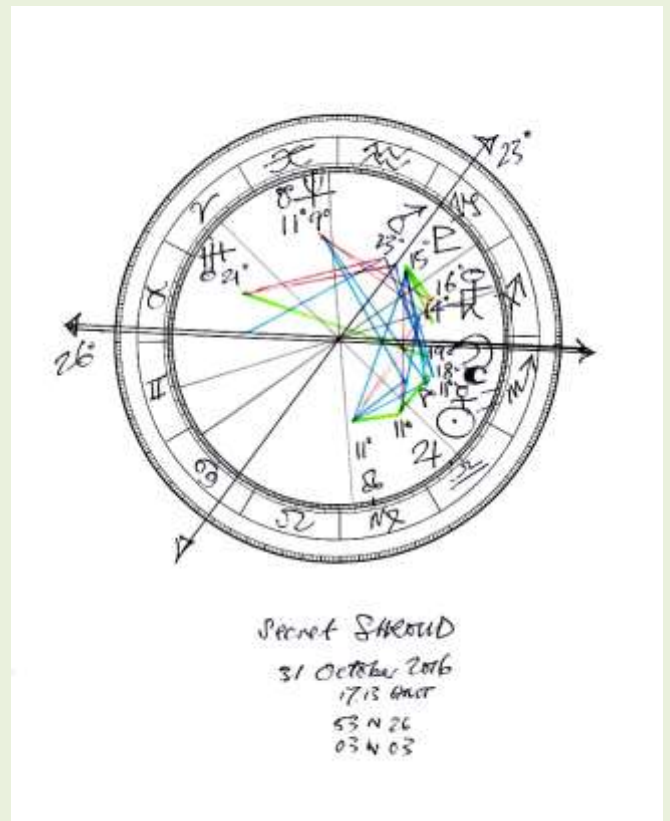
by Judith Page and Paul F Newman

Anatomy of a fictional book by Paul F Newman

A veiled scented woman leads university graduate Hervé Caradec into the greatest adventure of his life – a secret Cloth, a Holy Shroud, moved and hidden over the centuries. But why him? Why her? As they follow the medieval Templar trail across Europe: France, England, Switzerland ... others are close behind and the sinister purpose underlying the current quest is revealed. Finally as lovers they reach the Holy Land where love and death meet in climax.

Knights Templar, spirit guides, tumultuous storms, suspicion, manipulation, the Mandylion, Frankenstein, DNA.....and something that never died.

'Shroud' and 'shrouded', 'secret' – are all words that tie in with the secrecy in this story of hiding a holy Cloth over centuries and the search for it in the present, plus the 'veiled' woman Valerie in the dark forests who has her own secret purpose. The essence of the book is captured in the title secret SHROUD and is the latest novel written by Judith Page and myself. At the book's completion, coincidentally at Halloween 2016, I drew up an astrological birth chart to see how it fitted in with the story and characters, and as usual the tie-ups were surprisingly exact.



It followed a new moon in Scorpio the previous day with the Sun and Moon both still in Scorpio, the most secretive of the zodiac's Water signs. Images of nature at its most powerful come into play. The life and death intensity of water is like emotions in turmoil. Powerful storms play a key part in the story

and affect the emotions of the two main characters. Also the Moon was conjunct Lilith the Black Moon on the astrological chart personifying the dark lady in the story, the independent veiled woman with life and death secrets.

The book's subtitle is 'A love story shrouded in history' and appropriately Venus is the chart ruler, appearing here in the 8th house of death and rebirth, and conjunct Saturn. Saturn and Venus mean a serious and perhaps difficult love relationship also with age differences.

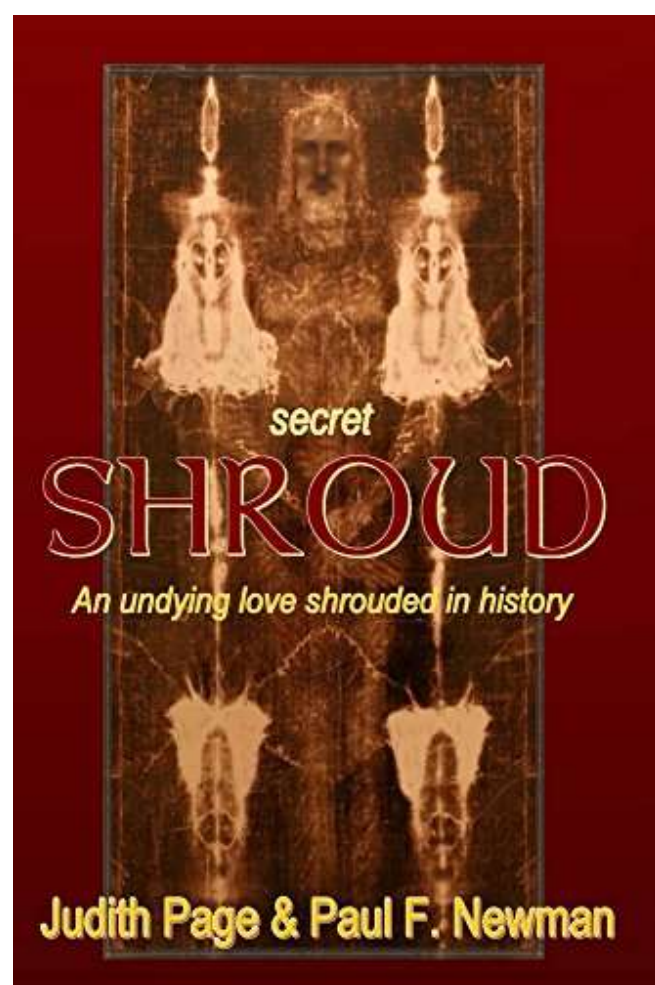
Pluto, the Sun and Moon ruler, is in the ninth house of foreign quests, travelling and far distances. In the historical past the Shroud has moved around many countries and the two main characters will travel a great deal during the course of the story to find it. It is a quest in which different languages are mentioned a lot (ninth house).

The Sun, Moon, Black Moon and Mercury are all in the chart's sixth house of work and service. In the story a certain task is the overriding factor and that task or work – to find and then return the Shroud to its rightful place – is ultimately undertaken in a true spirit of service. The sixth can also mean unequal partnerships.

The degree of chart-ruler Venus is Sagittarius 17, a degree with religious connotations and symbols of 'using ancient knowledge for imminent renewal'. Neptune conjunct the South Node in Pisces can also point to ancient religious orders. An important quote from the King James Bible opens the novel, where Jesus encourages his disciples to follow a man bearing a pitcher of water ... [Luke 22:10].

Mercury exactly sextiles the North Node. It's communicating about the present and future as well as the past.

'Knights Templar, spirit guides, tumultuous storms, suspicion, manipulation, the Mandylion, Frankenstein, DNA, and something that never died. A veiled woman leads university graduate Hervé Caradec into the greatest adventure of his life – A secret Cloth, a Holy Shroud, moved and hidden over the centuries. But why him? Why her? As they follow the medieval Templar trail across Europe: France, England, Switzerland... others are close behind and the sinister purpose underlying the current quest is revealed. Finally as lovers they reach the Holy Land where love and death meet in climax.'





In Light of Healing

Energy may not be visible, but it is as real as the air we breathe. Having that energy balanced within and around you is vital to your emotional, mental and physical wellbeing.

In Light of Healing was born to bring such balance, to give you the treatment and tools you need to live your life, amongst all the good and bad, while maintaining the most magnificent and optimum version of you.

EVIL EYE REMOVAL:

Negative energy is a force that can affect us more than we realise, the Evil Eye is the belief that a person can bestow bad luck onto another through the very gaze of their eyes, the words that they speak or even the thoughts that they have. Such energy can leave the receiver feeling tired, sick or simply out of sorts. I clear these energies through an ancient Greek ritual that lifts the Evil Eye restoring positivity and equilibrium to the person affected.

CHANNELLED HEALINGS

My channelled healings are a gentle non-invasive process that restores harmony and balance to your mind body and soul. Guided by Spirit my healings are tailored to the individual needs of my clients ensuring that they are attuned to their very own perfect vibration.

During my Healings and Evil Eye Removal I also receive messages and when guided I use cards as a tool for Divination.

Blessed Be Effie

Email: angel4e@optusnet.com.au

Facebook: www.facebook.com/inlightofhealing

Website: <http://www.inlightofhealing.com>



Tarot Corner



The Star

When you wish upon a star,
makes no difference who you are,
Anything your heart desires
will come to you.

The Star Tarot card holds that same hope and promise when you look up at the stars in the night sky and make a wish. The Star

reminds you that guidance can be found from within as well as through contact with the universal mind. In a tarot reading, the Star encourages you to apply yourself as you will reap the rewards.

The Star reminds you that you are seeker on a journey of discovery, when you keep your mind open, you can rise above the darker side of your nature. The stars shining above represent the parts of you that aspires to be better than you are and this journey represents the life force, a creative power directing you towards a better future.

This is a special time in your life when you should trust your inner wisdom and intuition. You can now trust that the Universe will provide you with everything you need.

Tarot card is from Glastonbury Tarot by Lisa Tenzin-Dolma

Spheres Of Light

Member Information

Spheres Of Light is an association of individuals from a variety of Pagan paths who seek to share experiences, understandings and teachings and who come together to celebrate and to connect with the cycles of the Earth through Lunar and Solar gatherings.

We are dedicated to the development of our own unique philosophy and practice which incorporates the honouring of ancient shamanic forces, as well as the integration and adaptation of ancient mysteries from other traditional and ancestral Pagan cultures. To this end, we seek to draw upon this accumulated knowledge to further develop and deepen our own understanding

and practice of evolutionary witchcraft.

We believe that however complicated we, or our systems become, that the essence of our truth is simple, and that is the truth of our experience of connection with ourselves, the earth and spirit, and the inspiration this provides.

There is no prerequisite learning to attend our Full Moon Circles. These Full Moon gatherings are Open Circles, meaning that all people are welcome to come along any time and experience a Full Moon circle with us.

We also run Dark Moon circles which consist of a group of dedicated seekers from Spheres

Of Light who are embarking upon a journey of discovery to know themselves and to experience new realities. The Dark Moon circle is held during the dark moon of each month which is a time when one can walk between the worlds, a time when one can face their shadow to find their hidden potential.

The focus of our activities is on integrating and adapting ancient teachings and shamanic techniques into our own perspective of evolutionary

Witchcraft. Each member brings to this Circle their own unique skills, knowledge and qualities, which helps to make the experience of the Circle a valuable resource of learning. It is the core Circle where we develop our Group Mind by working strongly and regularly together. The development of the Group Mind takes time, hard work and practice to achieve, thus dedication, commitment and regular attendance is critical to the Circle's long term spiritual growth and development.

Membership

To apply for membership of the dark moon circle you will be required to send a formal application to be admitted to the group listing your reasons for joining. You can send your application to

inquiries@spheresoflight.com.au

If you are invited to join you will be required to:

Regularly attend full moon circles and dark moon circles.

Demonstrate a high level of commitment and dedication to the circle's activities.

Ensure that you are able to fit in with the existing members of the Dark Moon group.

Regards

Janine





Janine Donnellan Space Clearing & Paranormal Consultant

Clearing negative energy from a building space creates an atmosphere that feels clean, smells fresh, feels lighter and more inviting and often allows the occupants to experience clearer thinking and happier harmonious environments.

The space clearing procedure usually takes between 1 & 2 hours, depending on the size of your home or office. The space clearings include marking out the Hartman gridlines with a dowsing rod and advice about the positioning of furniture, clearing out any spiritual inhabitants and finally concluding the session with a house blessing of your property.

Janine Donnellan can conduct a private space clearing in your home or business, clearing away negative or stagnant energetic 'imprints' built up over the years from the accumulation of day to day living and replacing them with calm, balanced energy.

Cost: \$150.00 plus travelling costs if outside the Sutherland Shire (in Sydney, Australia). BOOKINGS ARE ESSENTIAL ~ Please contact Janine on 0408 025 268 or <http://illumination.spheresoflight.com.au/> to make your booking. A non-refundable deposit of \$50.00 is required for all bookings and can be paid using PayPal.



What is PAN Inc.?

The Pagan Awareness Network Incorporated (PAN Inc.) is a not-for-profit educational association with members Australia-wide. It is run by a management committee whose members are drawn from a broad cross-section of the Pagan community. The Association is incorporated in the state of New South Wales, with sub-committees in other states of Australia. It has no formal ties with any religious body, but works in a proactive fashion, both within the Pagan community and as a point of contact for the public, including government and media organisations.

PAN Inc. aims to continue as the Australian Pagan community's most effective networking and educational body.

Our Mission

The Pagan Awareness Network Inc. (PAN Inc.) aims to:

Correct misinformation, raise awareness and educate the general public about Paganism and associated beliefs and practises in order to achieve religious tolerance

Foster the growth of the Pagan community through service

Brief History

The Pagan Awareness Network began in January 1997 when the Witches League for Public Awareness (Salem Mass. USA) withdrew their regional controllers. David Garland was the Australian representative and with the support of the coven he worked with,

had already embarked upon the task of making the WLPA a registered organisation here in Australia when this happened. Rather than waste all the work that had already been done David decided to start a new group here in Australia and so came up with the Pagan Awareness Network (PAN).

Join PAN

When you join PAN you are helping us to continue to provide help and services to the Pagan community. You will receive:

- A regular newsletter mailed to you.
- A membership card entitling you to discounts at selected PAN friendly businesses.
- Discounts on selected PAN run events
- Occasional giveaways and special deals.

Your membership goes towards helping us advocate for the Pagan community in the media and support events, groups and initiatives around the country.

Applying to join

To join PAN, first obtain a membership application form from our site. Applicants must be 18 years or older unless they have prior approval of the committee. Then fill out the membership form and send it back to us with payment. If you have any questions about joining please email us via our contact form [here](#).



Full Moon Circles - Sydney & Nowra



Spheres Of Light holds regular Full Moon Circles in the Sutherland Shire area of Sydney (Australia) and in Nowra (NSW south coast) on the Friday before each Full Moon (see dates below). These Full Moon gatherings are Open Circles, meaning that all Pagans are welcome to come along any time and experience a Full Moon circle with us.

SYDNEY & NOWRA

Next Full Moon Circle is on 10th February 2017— LUGHNASADH
TIME: arrive at 7:45pm for an 8:00pm start

WHAT TO BRING: a plate of food and/or drink (non-alcoholic) to share at supper afterwards.

WHAT TO WEAR: neat casual attire - cloaks/robes/ritual clothes may also be worn if desired.

COST PER CIRCLE: \$15 per person to help cover venue rental and other ancillary costs. If you would like to attend a circle please contact us for further details please send an email to inquiries@spheresoflight.com.au for Sydney Circle or phone Janine on 0408025268. Contact Nowra Circle at nowra.circle@spheresoflight.com.au

[Website: spheresoflight.com.au](http://spheresoflight.com.au)

SOuL Searchers

Centre for Paranormal
Research & Investigation



SOuL Searchers is so much more than a paranormal investigation team! The SOuL Searchers website is your one stop place for all things paranormal. We provide:

- Information and articles about our investigations and research
- We conduct training, workshops and paranormal meetups
- We produce a quarterly paranormal magazine
- We conduct private investigations in the Sutherland Shire, Sydney.

SOuLSPI (SOuL Searchers Paranormal Investigators) is our specially trained paranormal investigation team and during our private investigations we conduct in-depth evaluations of spiritual activity from our own unique perspective in order to resolve the concerns of the client and to assist grounded souls to move on to higher realms and to further our own understanding of the nature of spirits and the afterlife.

Our mission is to investigate all logical explanations of environments that are associated with paranormal activity. We use a common sense scientific approach to all our investigations but also have an open mind to all theories & methodologies. Our SOuL SPI team is composed of individuals with a variety of talents both scientific and psychic, including skeptics and believers.

Each investigation is conducted in a professional manner, addressing any concerns such as privacy, safety and security. Adherence to the wishes of the client is paramount in every case study.

PLEASE NOTE: All members are volunteers and we conduct all team investigations free of charge.

If you have got a question or a story that you would like to share or you just want to talk about ghosts in general, please "Like" and leave your comments on our Facebook page, we would love to hear from you.

Contact SOuL SPI: 0408 025 268





Axis Mundi Advertising Rates

Would you like to help sponsor our free online magazine and advertise your pagan-friendly business or your pagan website in Axis Mundi? If you do not have a suitable advertising banner we can make one for you, based on graphics from your own website or from photos and logos you email to us (jpg or png formats preferred).

Attention Advertisers!!

Did you know that SOL Magazines has now received over 100,000 visits? If you advertise in the Axis Mundi Magazine your ad will also be advertised for free in Soul Searchers and vice versa! Our advertising costs are the lowest in our industry. If you write an article for our magazines then your advertising is free.

Contact Janine Donnellan (Editor) at: axismundi@spheresoflight.com.au
For further information and payment details.

Advertisement Sizes and Costs

“Business card”.....\$10 per issue or \$30 for 4 issues
 “Quarter page”.....\$20 per issue or \$70 for 4 issues
 “Half page”.....\$35 per issue or \$120 for 4 issues
 “Full page”.....\$50 per issue or \$150 for 4 issues

(Advertisement sizes are based on an A4 page)



Welcome to SOL Illumination

Offering Holistic Services and Personal Development Workshops:

- Reiki Healing
- Chakra Balancing
- Energetic Healing
- Shamanic Healing
- Tarot Reading
- Mediumship & Psychic Development
- Paranormal Investigations
- Parapsychology
- Space Clearing
- and much more...

Contact:

Janine Donnellan

Janine.donnellan@gmail.com

Illumination.spheresoflight.com.au

0408025268

